

PRODUCT INFORMATION PACKET

Model No: 5KH36PNB171

Catalog No: HG458

0.25 HP Explosion Proof Motor, 1 phase, 1800 RPM, 115 V, 48 Frame, EPNV
Explosion Proof NEMA Motors



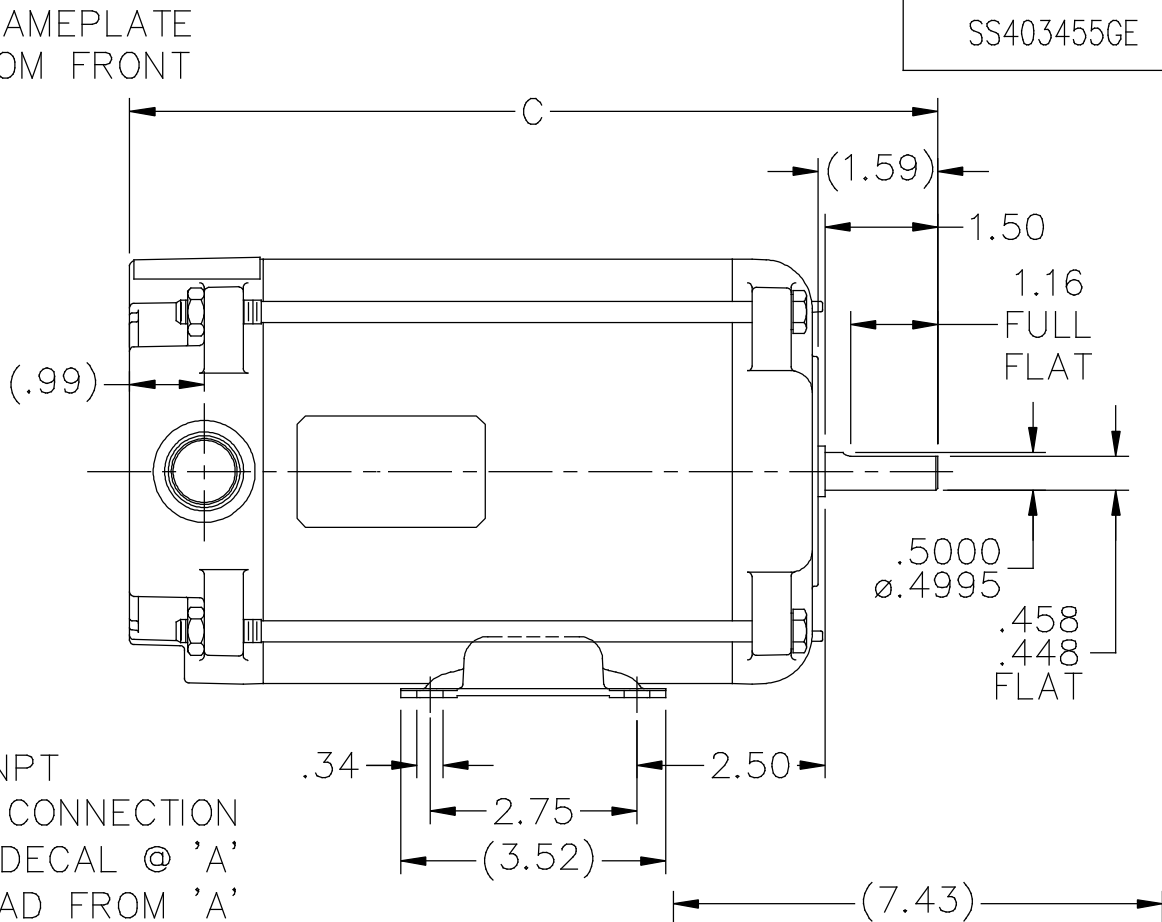
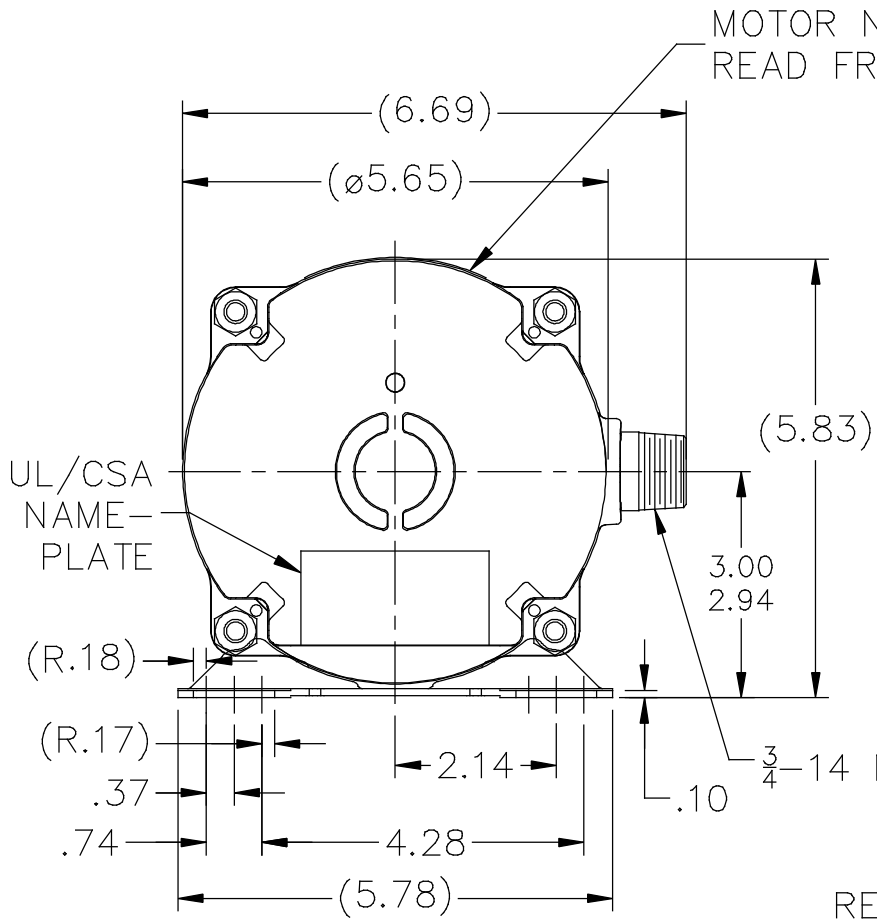


Nameplate Specifications

Output HP	0.25 Hp	Output KW	0.19 kW
Frequency	60 Hz	Voltage	115 V
Current	4.4 A	Speed	1725 rpm
Service Factor	1	Phase	1
Efficiency	59.5 %	Power Factor	67
Duty	Continuous	Insulation Class	A
Design Code	NO DESIGN CODE	KVA Code	N
Frame	48	Enclosure	Explosion Proof Non Ventilated
Thermal Protection	Automatic	Ambient Temperature	40 °C
Drive End Bearing Size	6203	Opp Drive End Bearing Size	6203
UL	UL Listed And CSA Certified	CSA	Y
CE	N	IP Code	54
Hazardous Location	EXP PROOF CL I GR D CL II GR F&G T3B		

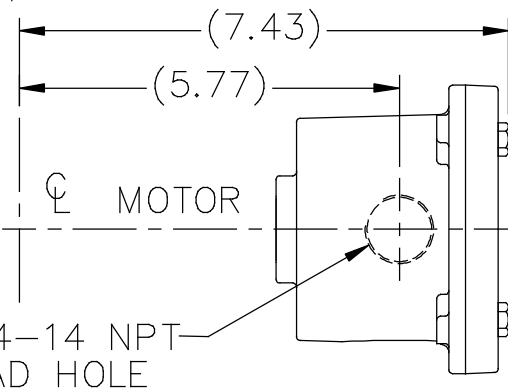
Technical Specifications

Electrical Type	Split Phase	Starting Method	Across The Line
Poles	4	Rotation	Selective Counterclockwise
Resistance Main	0 Ohms	Mounting	Rigid base
Motor Orientation	Horizontal	Drive End Bearing	Ball
Opp Drive End Bearing	Ball	Frame Material	Rolled Steel
Shaft Type	NEMA 48	Overall Length	10.74 in
Frame Length	6.23 in	Shaft Diameter	0.500 in
Shaft Extension	1.59 in	Assembly/Box Mounting	F1 ONLY
Outline Drawing	A-SS403455GE-623	Connection Drawing	A-EE7116K-GE



LEAD DESCRIPTION: 1 BLACK, 1 PURPLE, 1 BLUE, 1 GREEN, 1 YELLOW, AND 1 RED ALL EXITING A SEALED PIPE NIPPLE, 26" LONG.

VIEW OF CONDUIT BOX



DASH	C
517	9.68
580	10.31
623	10.74

NO.	REVISION	BY & DATE	CHK	TOLERANCES UNLESS SPECIFIED		FINISH
				DEC.	INCHES	
3	ADDED VIEW OF COND BOX INSTALL ISAAC 12-5139	WGJ 03-05-2013	DD	.X	±.1	
2	CHG. LEADS FROM 6" TO 26" CN39528	RWR 08/26/2005	ML	.XX	±.03	
1	ADD UL/CSA AND MOTOR NAMEPLATES, CHANGED STUDS TO OVBOLTS CN 46061	MJK 04/29/2005		.XXX	±.005	
				.XXXX	±.0005	
				ANG	±7'30"	



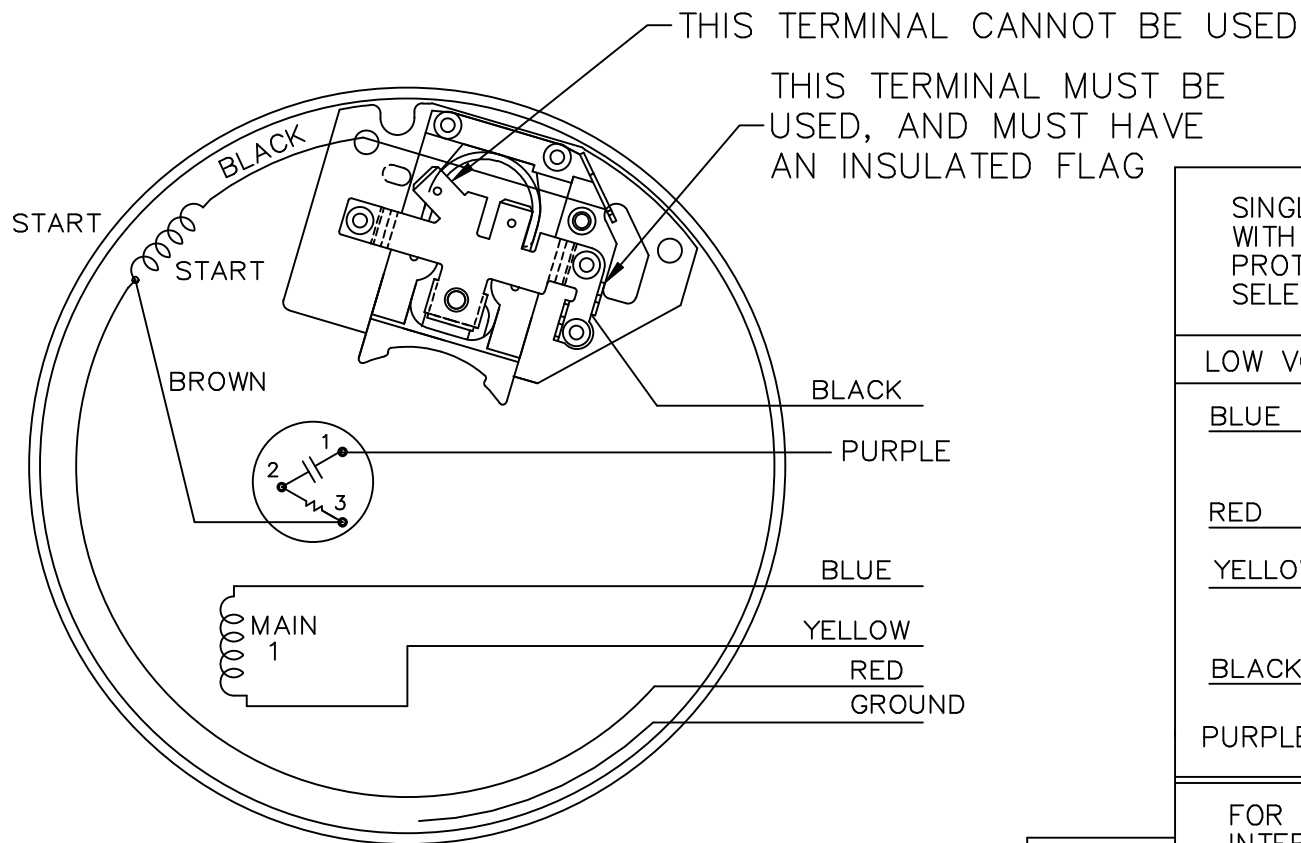
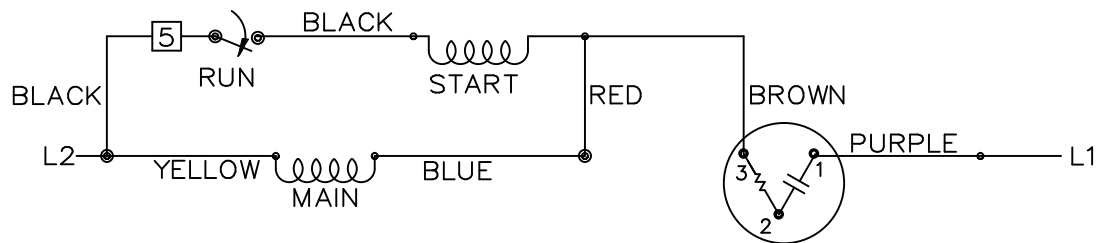
TITLE OUTLINE
48 FRAME - XP
MAT'L.

DRAWN	RWR 03-15-2005
CHK	ML 03-18-2005
APPD	MJS 03-21-2005
SCALE	3=8
REF	A-SS403455
FMF	
PREV	

THIS DRAWING IN DESIGN AND DETAIL IS OUR PROPERTY AND MUST NOT BE USED EXCEPT IN CONNECTION WITH OUR WORK ALL RIGHTS OF DESIGN AND INVENTION ARE RESERVED THIS IS AN ELECTRONICALLY GENERATED DOCUMENT - DO NOT SCALE THIS PRINT

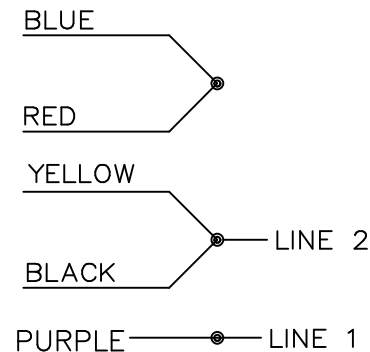
RFP 03-21-2005
DIST WP
CAD FILE ss403455ge

SIZE A
DRAWING NO. SS403455GE
PAGE 1 OF 1
REV. 3



SINGLE VOLTAGE
WITH OVERLOAD
PROTECTION
SELECT ROTATION

LOW VOLT. CCW ROT.



FOR CW ROT.
INTERCHANGE BLUE
WITH YELLOW LEAD.

- A-S4CU1
- A-S6A4
- A-S4A2

		TOLERANCES UNLESS SPECIFIED		MARATHON ELECTRIC		DRAWN NB 03-14-2006	
		DEC.	INCHES			CHK	VL 03-14-2006
		.X	±.1	TITLE CONNECTION DIAGRAM		APPD	VL 03-14-2006
		.XX	±.02			SCALE	5=8
		.XXX	±.005			REF	EE7116K-GE
		.XXXX	±.0005			FMF	MU71130
NO.	REVISION	BY & DATE	CHK	ANG	FINISH	PREV	
			RFP	03-16-2006	CAD FILE EE7116K	SIZE	DRAWING NO. PAGE 1 OF 1 REV.
			DIST	WP		A	EE7116K

THIS DRAWING IN DESIGN AND DETAIL IS OUR PROPERTY AND MUST NOT BE USED EXCEPT IN CONNECTION WITH OUR WORK ALL RIGHTS OF DESIGN AND INVENTION ARE RESERVED THIS IS AN ELECTRONICALLY GENERATED DOCUMENT - DO NOT SCALE THIS PRINT



GE Commercial Motors

By Regal-Beloit

**1030 Swinney Avenue
Fort Wayne, Indiana
46802
Phone (260) 439-3330**

CERTIFICATION DATA SHEET

CUSTOMER:
ORDER #:
CONN. DIAGRAM:
OUTLINE:
WINDING #:

CUSTOMER DATA SHEET
CUSTOMER PO #:
MODEL #:
CUSTOMER PART #:
MOUNTING:

TYPICAL MOTOR PERFORMANCE DATA

HP	KW	SYNC. RPM	F.L. RPM	FRAME	ENCLOSURE	KVA CODE	DESIGN
1/4	0.19	1800	1725	48	EPNV	N	NO DESIGN CODE

PH	Hz	VOLTS	AMPS	START TYPE	DUTY	INSL	S.F.	AMB°C
1	60	115	4.4	ACROSS THE LINE	CONTINUOUS	A	1.0	40

FULL LOAD EFF:	59.5	3/4 LOAD EFF:	57.3	1/2 LOAD EFF:	49.7	GTD. EFF	0	ELEC. TYPE
FULL LOAD PF:	67	3/4 LOAD PF:	59.5	1/2 LOAD PF:	50.4	SPLIT PHASE		

F.L. TORQUE	LOCKED ROTOR AMPS	L.R. TORQUE	B.D. TORQUE	F.L. RISE°C
12.17 LB-FT	26.3	20 LB-FT 164 %	29.2 LB-FT 240 %	-

SOUND PRESSURE @ 3 FT.	SOUND POWER	ROTOR WK^2	MAX. WK^2	SAFE STALL TIME	STARTS / HOUR	APPROX. MOTOR WGT
- dbA	- dbA	0 LB-FT^2	- LB-FT^2	10 SEC.	-	0 LBS.

***** SUPPLEMENTAL INFORMATION *****

DE BRACKET TYPE	ODE BRACKET TYPE	MOUNT TYPE	ORIENTATION	SEVERE DUTY	HAZARDOUS LOCATION	DRIIP COVER	SCREENS	PAINT
STANDARD	STANDARD	RIGID	HORIZONTAL	FALSE	EXP PROOF CL I GR D CL II GR F&G T3B	FALSE	NONE	GRAY - GE (POWDER)

BEARINGS DE	ODE	GREASE	SHAFT TYPE	SPECIAL DE	SPECIAL ODE	SHAFT MATERIAL	FRAME MATERIAL
BALL 6203	BALL 6203	POLYREX EM	T	NONE	NONE	1144 STRESSPROOF (G-223)	ROLLED STEEL

THERMO-PROTECTORS				THERMISTORS	CONTROL	SPACE HEATERS
THERMOSTATS	PROTECTORS	WDG RTDS	BRG RTDS	NONE	FALSE	NONE
NONE	AUTOMATIC	NONE	NONE			

*** INVERTER TORQUE:** NONE
INV. HP SPEED RANGE: NONE

ENCODER: NONE
NONE NONE
NONE NONE PPR

BRAKE: NONE NONE
NONE P/N NONE
NONE NONE
NONE FT-LB NONE V NONE HZ

N
O
T
E

S

*

PREPARED BY: Bhargavi Dontham
DATE: 05/23/2018 02:13:25 AM
FORM: 3531 REV.3 02/07/99
**** Subject to change without notice.**



MARATHON ELECTRIC CORPORATION
TYPICAL PERFORMANCE CURVE for AC MOTOR

Customer

Curve at

460 Volts
60 HZ
0.25 HP

HP 0.25

PHASE 1

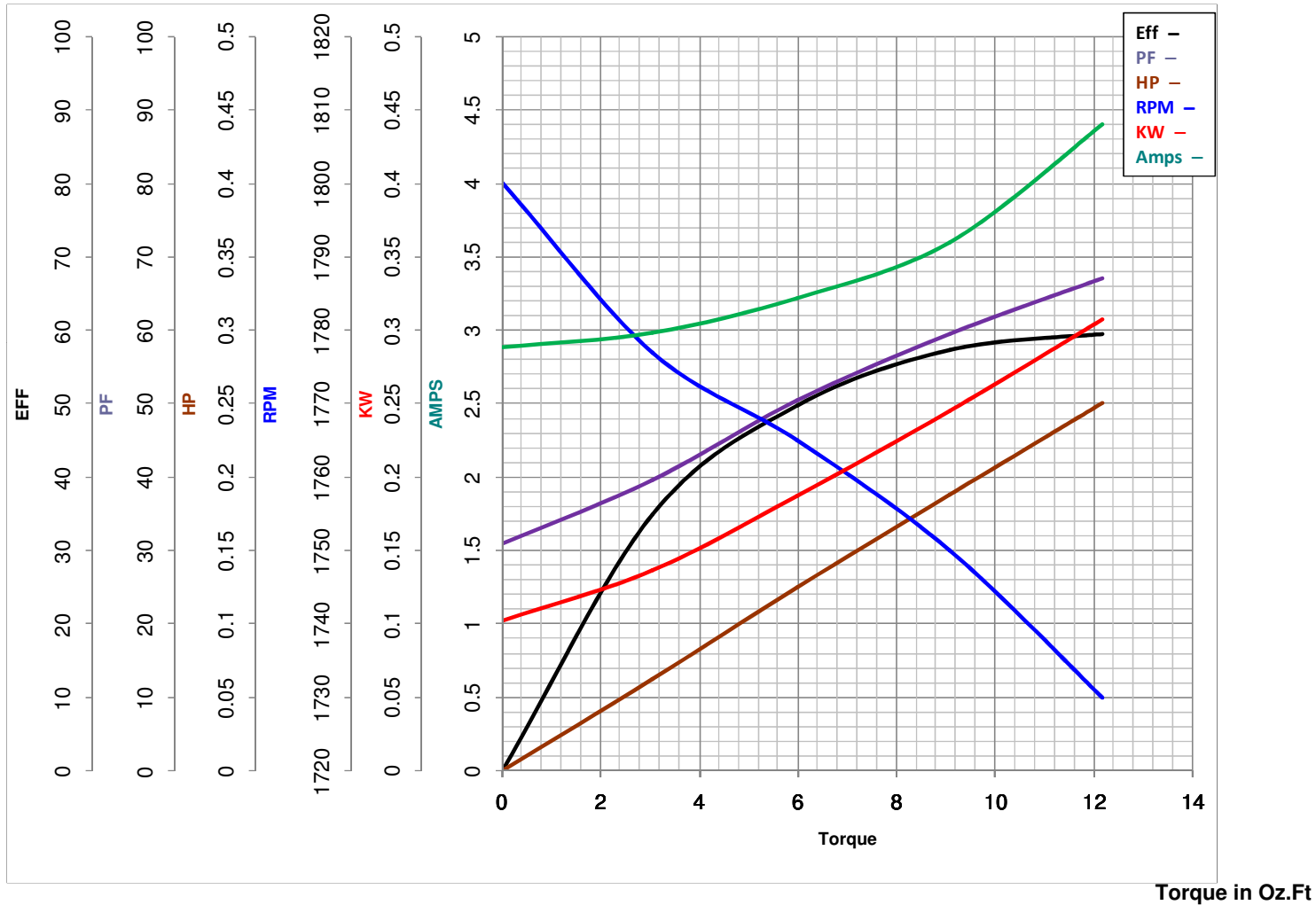
Model No 5KH36PNB171

VOLTS 115

Catalog No HG458

HZ 60

RPM 1725



FL TORQUE 12.17 Oz.Ft
BD TORQUE 29.2 Oz.Ft
LR TORQUE 20 Oz.Ft

FL AMPS 4.4
PU TORQUE 19.5 Oz.Ft
LR AMPS 26.3

WINDING SE484370-

Date 3/8/2019